

OFFICIAL NCAA BASKETBALL BOX SCORE

Date 3-19-86 Site RUPP ARENA

VISITORS (Last Name, First)

| No. | NAME | PG | FGA | FT | FTA | REB | | PF | TP | MIN | A | TO | BLK | S | |
|------------------------------------|----------------|----|-----|----|-----|------|------|----|----|-----|-----|----|-----|---|---|
| | | | | | | Off. | Def. | | | | | | | | |
| PAINTSVILLE | | | | | | | | | | | | | | | |
| 33 | PELPHREY, JOE | f | 10 | 18 | 12 | 17 | 13 | 10 | 3 | 32 | 31 | 0 | 3 | 4 | 0 |
| 23 | COUCH, JOEY | f | 3 | 8 | 2 | 3 | 1 | 3 | 5 | 8 | 26 | 0 | 2 | 0 | 0 |
| 21 | MINIX, MIKE | c | 4 | 12 | 5 | 6 | 3 | 1 | 2 | 13 | 31 | 0 | 6 | 0 | 0 |
| 03 | ADKINS, KEITH | g | 5 | 15 | 5 | 6 | 2 | 1 | 5 | 15 | 31 | 0 | 3 | 0 | 1 |
| 15 | BALDWIN, JEFF | g | 2 | 4 | 0 | 0 | 1 | 1 | 5 | 4 | 24 | 1 | 1 | 0 | 0 |
| 44 | HUFF, BRETT | | | | | | | | | | 1 | | | | |
| 11 | BURCHELL, TODD | | | | | | | 1 | | | 3 | | | | |
| 5 | DANIELS, LANCE | | | | | | | | | | 1 | | | | |
| 14 | GRAY, JARRED | | 0 | 1 | | | | | 4 | 0 | 9 | | | | |
| 25 | ADAMS, GREG | | | | | | | | | | 1 | | | | |
| 12 | SMITH, CHRIS | | | | | | | | | | 1 | | | | |
| 35 | COOLEY, MIKE | | | | | | | | | | 1 | | | | |
| TEAM REBOUNDS (Included in Totals) | | | | | | 1 | 0 | | | | | | | | |
| TOTALS | | | 24 | 58 | 24 | 32 | 18 | 19 | 25 | 72 | 160 | 1 | 15 | 4 | 1 |

FG %: 1st Half 34.6% 2nd Half 68.2% Game 41.4% Deadball
 FT %: 1st Half 62.5% 2nd Half 87.5% Game 75.0% Rebounds 3

HOME

| No. | NAME | PG | FGA | FT | FTA | REB | | PF | TP | MIN | A | TO | BLK | S | |
|------------------------------------|--------------------|----|-----|----|-----|------|------|----|----|-----|-----|----|-----|---|---|
| | | | | | | Off. | Def. | | | | | | | | |
| HOPKINSVILLE | | | | | | | | | | | | | | | |
| 52 | PEACHERS, MIKE | f | 10 | 15 | 6 | 8 | 5 | 7 | 1 | 26 | 31 | 2 | 1 | 0 | 0 |
| 34 | QUARLES, JEFF | f | 4 | 4 | 2 | 3 | 1 | 4 | 5 | 10 | 25 | 2 | 5 | 2 | 3 |
| 30 | WARE, LANDOLT | c | 2 | 5 | 8 | 10 | 2 | 2 | 4 | 12 | 23 | 5 | 3 | 0 | 2 |
| 20 | BINKLEY, JIMBO | g | 5 | 7 | 2 | 6 | 0 | 1 | 3 | 12 | 25 | 1 | 2 | 0 | 1 |
| 44 | CRUTCHFIELD, CHRIS | g | 9 | 14 | 0 | 1 | 2 | 7 | 4 | 18 | 30 | 0 | 3 | 0 | 0 |
| 24 | CALVERT, JOHN | | 0 | 2 | 0 | 0 | 1 | 0 | 1 | 0 | 9 | 0 | 0 | 0 | 0 |
| 10 | BROWN, DAVID | | 1 | 4 | 3 | 4 | 0 | 1 | 4 | 5 | 13 | 1 | 5 | 0 | 2 |
| 40 | LANGHI, DONNIE | | | | | | | | | | 1 | 0 | 0 | 0 | 0 |
| 22 | QUARLES, KENNY | | | | | | | | | | 1 | 0 | 0 | 1 | 1 |
| 50 | QUARLES, COREY | | | | | | | | | | 0 | 0 | 0 | 0 | 0 |
| 42 | BURRUS, GARY | | | | | | | | | | 1 | 0 | 0 | 0 | 0 |
| 54 | LANGHI, MIKE | | | | | | | | | | 1 | 0 | 0 | 0 | 0 |
| TEAM REBOUNDS (Included in Totals) | | | | | | 1 | 1 | | | | | | | | |
| TOTALS | | | 31 | 51 | 21 | 32 | 12 | 23 | 22 | 83 | 160 | 11 | 19 | 3 | 9 |

FG %: 1st Half 60.0% 2nd Half 61.9% Game 60.8% Deadball
 FT %: 1st Half 66.7% 2nd Half 65.5% Game 65.6% Rebounds 0

OFFICIALS: BURNEY JENKINS
RIP HATFIELD

| SCORE BY PERIODS | 1st H. | 2nd H. | OT | OT | FINA |
|------------------|--------|--------|----|----|------|
| PAINTSVILLE | 15 | 13 | 21 | 23 | 72 |
| HOPKINSVILLE | 16 | 22 | 24 | 21 | 83 |

Technical Fouls: _____
 Attendance 15,000

ABBREVIATED HALFTIME BOX

Date 3-19-86
 Crowd 15,000

| | PAINTSVILLE | | HOPKINSVILLE | |
|---|-------------|---|--------------|----|
| Halftime Score | 28 | | 38 | |
| Field Goals Attempted | 26 | | 30 | |
| Field Goals Made | 9 | | 18 | |
| Field Goal Percentage | 34.6 | | 60.0 | |
| Free Throws Attempted | 16 | | 3 | |
| Free Throws Made | 10 | | 2 | |
| Free Throws Percentage | 62.5 | | 66.6 | |
| Rebounds (Total Individual) | 16 | | 16 | |
| Individual Scoring Leaders | MILIX | 9 | PEACHERS | 14 |
| | ADAMS | 7 | | |
| | | | | |
| Individual Rebounds Leaders | PELPIREY | 8 | PEACHERS | 6 |
| | | | | |
| | | | | |
| Players with three or more personal fouls | | | J. QUARLES | 3 |
| | | | WARE | 3 |
| | | | | |

Additional Information

| | | |
|-----------|---|---|
| ASSISTS | 1 | 6 |
| TURNOVERS | 8 | 9 |
| | | |
| | | |

NCAA BASKETBALL SHOT CHART

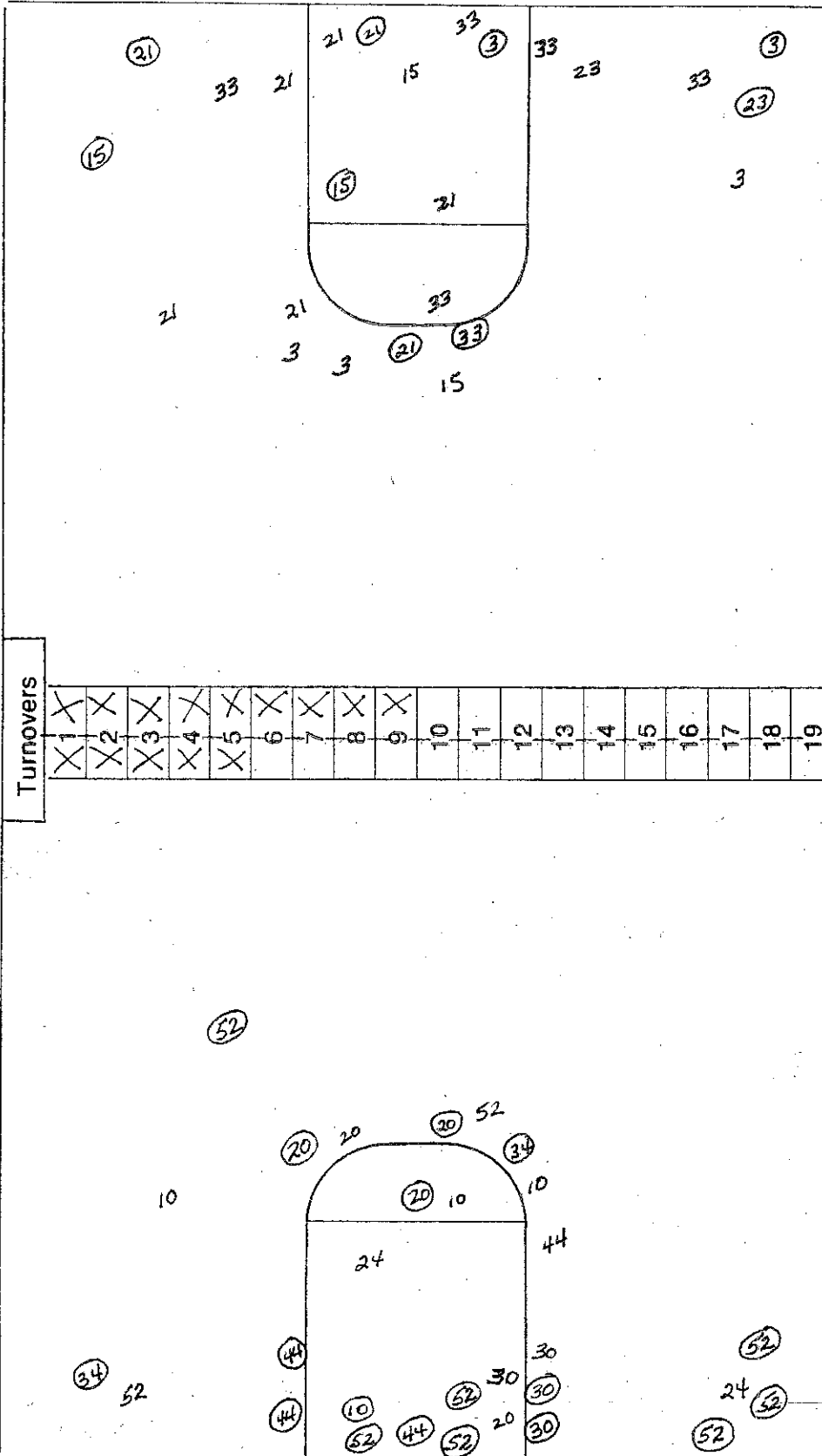
Game 1

First Half

Second Half

(Circle one)

Layups



Attempted 25
 Made 9
 Percentage _____

Attempted 30
 Made 18
 Percentage _____

Team Paintsville 28

Team Hopkinsville 38

Layups

NCAA BASKETBALL SHOT CHART

Game 1

First Half

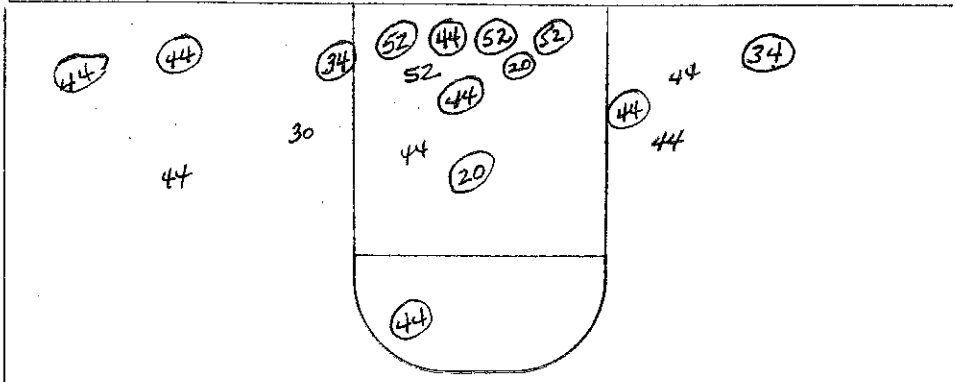
Second Half

(Circle one)

Layups

18

Team Hopkinsville 83



Attempted 19

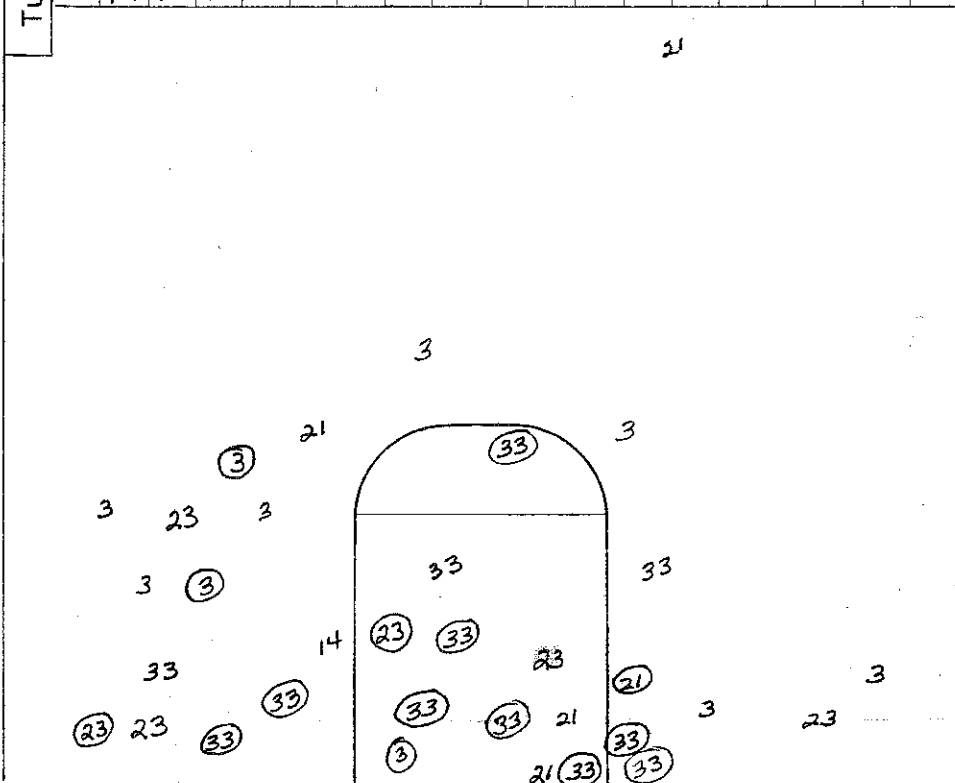
Made 13

Percentage _____

Turnovers

| | | | | | | | | | | | | | | | | | | |
|---|---|---|---|---|---|---|---|---|----|----|----|----|----|----|----|----|----|----|
| X | X | X | X | X | 6 | 7 | 8 | 9 | 10 | 11 | 12 | 13 | 14 | 15 | 16 | 17 | 18 | 19 |
|---|---|---|---|---|---|---|---|---|----|----|----|----|----|----|----|----|----|----|

Team Painville 72



Attempted 30

Made 15

Percentage _____

Layups

69th Boy's State High School Basketball Tournament
 Hopkinsville (29-4) vs Paintsville (29-4)
 Rupp Arena; Lexington, Ky.
 March 19, 1986

Session One

Officials: Rip Hatfield and Burney Jenkins

| | | First Quarter | |
|------|--|---------------|--|
| Time | Hopkinsville play | Score | Paintsville play |
| 8:00 | Starters: Ware, Crutchfield, Peachers, J. Quarles, and Binkley | 00-00 | Starters: Couch, Pelphrey, Baldwin, Minix, and Adkins |
| 7:47 | Peachers 17 ft jumper (Binkley) | 2-0 | |
| 7:28 | foul on J. Quarles P1, T1 | 2-1 | Minix fta-ft side |
| 6:32 | | 2-3 | Adkins bombs xx from left xxxxxx (Couch) |
| 6:18 | J. Quarles from the right corner | 4-3 | |
| 5:45 | J. Quarles from the free throw stripe | 6-3 | |
| 5:35 | Binkley fouls P1, T2 | | |
| 5:18 | Crutchfield layup (Binkley) | 8-3 | |
| 4:53 | | | Rx Pelphrey fouls P1, T1 |
| 4:41 | Ware short jumper | 10-3 | |
| 4:20 | J. Quarles fouls P2, T3 | | |
| 4:04 | foul on Binkley P2, T4 | | Pelphrey fta-fta |
| 4:02 | | 10-5 | Baldwin with putback |
| 3:31 | | 10-7 | Baldwin 18 ft L side |
| 3:18 | | | Couch fouls P1, T2 |
| 3:04 | Ware fouls P1, T5 BONUS | | Pelphrey fta+ |
| 2:54 | | | foul on Baldwin P1, T3 |
| 2:38 | | 10-9 | Pelphrey takes the rebound and goes down |
| 2:12 | xxxx foul on Crutchfield P1, B | 10-11 | to the free throw line for jumper |
| 1:37 | | | Adkins ft+ft |
| 1:21 | Peachers from deeeep in the corner | 12-11 | Gray fouls P1, T4 |
| 0:55 | | 12-13 | Minix 15 ft jumper |
| 0:42 | Peachers 18 ft L baseline | 14-13 | |
| 0:21 | foul on Calvert P1 | 14-15 | Minix ft-ft |
| 0:08 | Peachers drives to L baseline for 10 ft J. | 16-15 | |

| | | Second Quarter | |
|------|--|----------------|------------------------------------|
| 7:49 | Brown fouls P1, B | | Pelphrey fta+ |
| 7:46 | foul on Ware P2 | 16-17 | Pelphrey ft-ft |
| 7:32 | Crutchfield 8 ft turnaround (Ware) | 18-17 | |
| 6:12 | J/Quarles steals & feeds Brown for layup | 20-17 | |
| 5:57 | foul on Brown P2 | 20-20 | Adkins layup ft |
| 5:42 | Peachers drives left baseline for easy 2 | 22-20 | |
| 5:08 | | 22-22 | Minix 14 ft jump shot |
| 4:57 | Binkley 10 ft jumper | 24-22 | |
| 4:29 | Peachers fastbreak layup (Ware) | 26-22 | |
| 3:49 | Binkley 18 ft jump shot | 28-22 | |
| 3:36 | | 28-24 | Minix drives for layup |
| 3:21 | Crutchfield 5 ft turnaround (Ware) | 30-24 | |
| 2:38 | Ware ft+ft | 32-24 | Minix fouls P1, T5 BONUS |
| 2:22 | J. Quarles P3 | 32-26 | Pelphrey ft-ft |
| 2:06 | Ware takes the lob from Peachers-layup | 34-26 | |
| 1:40 | Ware fouls P3,B | | Adkins fta+ |
| 1:23 | R Crutchfield fta+ | | foul on Pelphrey P2.B |
| 1:17 | peachers tipin | 36-26 | |
| 0:59 | | 36-28 | Couch 17 ft off the in-bounds play |
| 0:02 | Binkley from the top of the key | 38-28 | |

HALF

Lead changes-10
 Ties-2

69th Boy's State High School Basketball Tournament
Hopkinsville vs Paintsville
Attendance:

| Hopkinsville play | | Score | Paintsville play |
|-------------------|--|-------|--------------------------------------|
| 8:00 | | 38-28 | |
| 7:48 | Peachers ft-fta | 39-28 | foul on Couch P2, T1 |
| 7:17 | Peachers layup (Ware) | 41-28 | |
| 6:59 | Crutchfield 8 ft jumper (Peachers) | 43-28 | |
| 6:57 | | | Paintsville Timeout (1) |
| 6:36 | | | Baldwin fouls P2, T2 |
| 6:31 | J. Quarles 5 ft | 45-28 | |
| 6:18 | | 45-30 | Pelphrey 15 ft jumper |
| 6:03 | Crutchfield from underneath | 47-30 | |
| 5:37 | Peachers tipin | 49-30 | |
| 5:04 | | | Adkins fouls P1, T3 |
| 4:42 | | | Baldwin P3, T4 |
| 4:49 | Crutchfield 16 ft from in bounds play (J.Q.) | 51-30 | |
| 4:32 | Crutchfield P2, T1 | 51-32 | Couch from the lane fta |
| 4:27 | | 51-34 | Pelphrey rebound basket |
| 4:19 | Binkley 8 ft jumper ft | 54-34 | Couch P3, T5 (Bonus) |
| 4:06 | Binkley fta+ | | Pelphrey P3, B |
| 3:51 | | 54-36 | Pelphrey off balance in the lane |
| 3:39 | Crutchfield 8 ft R baseline | 56-36 | |
| 3:16 | | 56-38 | Adkins 18 ft R side |
| 3:08 | J. Quarles fta+ | | foul on Adkins P2, B |
| 2:51 | | 56-40 | Couch 18 ft R side rattles in x |
| 2:47 | Binkley fta+ | | foul on Baldwin P4, B |
| 2:31 | | 56-42 | Pelphrey fights for rebound & scores |
| 2:22 | Peachers ft+ft | 58-42 | Adkins P3, B |
| 2:07 | Ware P4, T2 | 58-45 | Pelphrey 12 ft R baseline ft |
| 0:58 | J. Quarles ft-ft | 60-45 | Couch fouls P4 |
| 0:48 | | 60-47 | Pelphrey spins 8ft |
| 0:11 | foul on Crutchfield P3, T3 | 60-49 | Pelphrey ft-ft |
| 0:05 | Crutchfield 5 ft L baseline (Calvert) | 62-49 | |

Third Quarter

| | | | |
|------|---|-------|--|
| 7:26 | Binkley P3, T4 | 62-51 | Minix ft-ft |
| 7:19 | Binkley ft+fta | 63-51 | Gray fouls P2, B |
| 7:05 | Brown feeds Binkley on the break-layup | 65-51 | |
| 6:43 | Peachers P1, T5 BONUS | 65-53 | Pelphrey ft+ft |
| 6:24 | Brown fouls P3, B | 65-55 | Couch ft+ft |
| 6:09 | Peachers takes the lob from J. Quarles | 67-55 | |
| 5:39 | J. Quarles stop-n-pop from 10 ft | 69-55 | |
| 5:35 | | | Paintsville Timeout (2) |
| 5:25 | | 69-57 | Pelphrey xxx rebound basket |
| 4:44 | | 69-59 | Minix xxxxxx layup |
| 4:30 | Peachers ft+fta | 70-59 | Couch fouls P5, B |
| 4:28 | Crutchfield rebound score | 72-59 | |
| 3:37 | Crutchfield P4, B | 72-61 | Adkins ft+ft |
| 3:23 | Brown charges P4 | | |
| 3:10 | J. Quarles fouls P4 | | |
| | Hopkinsville Timeout (1) | 72-63 | Pelphrey ft-ft |
| 2:31 | Binkley fta+ | | Baldwin fouls P5, B |
| 2:05 | Ware ft+fta (no shot-Basket interference) | 73-63 | Gray P3, B |
| 1:29 | | 73-65 | Pelphrey rebound basket |
| 1:14 | Brown ft+ft | 75-65 | Adkins P4, B |
| 1:06 | | 75-67 | Adkins 18 ft jumper R side |
| 1:04 | | | Paintsville Timeout (3) |
| 1:01 | Brown ft+fta | 76-67 | Burchell P1, B |
| 0:55 | | 76-69 | Adkins spins with the rebound |
| 0:43 | J. Quarles P5, B | 76-70 | xxxxxx ft+fta Pelphrey |
| 0:40 | Ware ft+ft | 78-70 | Minix P2, B |
| 0:21 | Peachers ft+ft | 80-70 | Pelphrey P4, B |
| 0:13 | | 80-72 | Pelphrey with another rebound basket |
| 0:12 | | | Paintsville Timeout (4) |
| 0:09 | Ware ft-fta | 81-72 | Gray P4 |
| 0:06 | Ware ft+ft | 83-72 | foul on Adkins P5, B |

FINAL

Hopkinsville 83-72 Paintsville

Lead changes-10
Ties-2